



FertilityFriend.com Overview

Charting Your Way To Conception

FertilityFriend.com
A Comprehensive Charting System

The screenshot shows the FertilityFriend.com website interface. At the top, there is a search bar and a login section with fields for 'Username' and 'Password', and buttons for 'Login' and 'Sign Up'. Below the search bar is a navigation menu with links for Home, Charting, Education, Galleries, Forums, Account, and Contact Us. The main content area is divided into several sections:

- Charting Apps:** My Chart, Mobile Access, iPhone Apps, Pregnancy Tracker.
- Education:** Charting Q&A, Tech Q&A, Videos, Charting Course, Games, Site Blog, Book & Tutorials.
- Galleries:** Charts, Stories, Test Results/Photos, Pregnancy Ultrasounds, Pregnancy Signs.
- Forums:** Trying To Conceive, Chat Rooms, Community Meter, Pregnancy Forums.
- Account:** Settings, Password, Email, Order.
- Contact Us:** Account Support, Charting Support, Terms Of Service, Community Charter, Privacy Policy.

The central content area features a welcome message: "Welcome to FertilityFriend.com Charting Your Way To Conception." Below this, it states "Accurate and comprehensive ovulation calendar and fertility charting:" and lists several benefits:

- Free Interactive Ovulation Chart: Pinpoint Your Fertile Days
- Comprehensive Chart Analysis and Advanced Ovulation Detector
- Fully Featured Ovulation Calendar: Your Cycles at a Glance
- Dramatically Increase Your Chances of Conception
- Caring Expert Support
- Join Thousands of other Women with the Same Goal

Below the benefits is a "Community Overview" section with the following statistics:

- Gallery Charts: 128000+
- Members Stories: 3000+
- Tests Photos: 9000+
- Course Certificates: 15000+
- Pregnancy Ultrasounds: 12000+

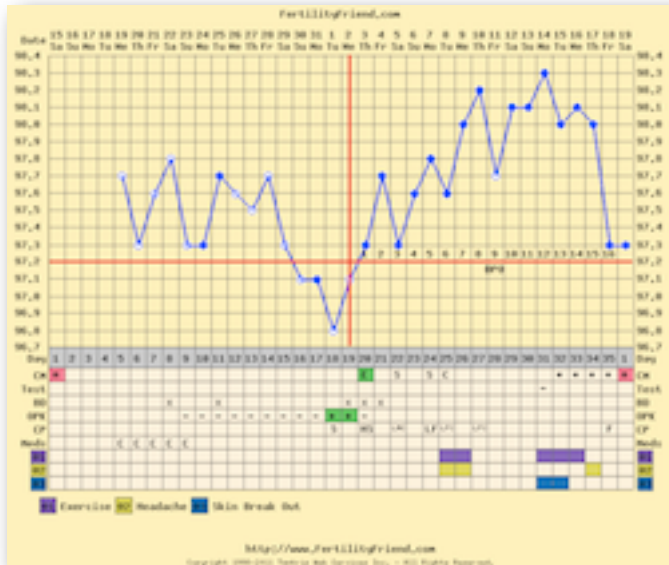
There are three promotional banners on the right side of the main content area:

- "Start Charting Now! FREE" with an icon of a woman and a man.
- "FREE CHARTING LESSONS" with an icon of a graduation cap.
- "LEARN the basics in 25 minutes" with an icon of a television set.

Below the community overview is a "Recent Message Board Posts" section with a list of topics:

- Just for fun!
- Difference between femara and clomid
- What to do?

At the bottom of the main content area, there is a "Recently Posted Chart" section with a small line graph showing data points over time.



Why Charting?

There are just a few **fertile days** each cycle.

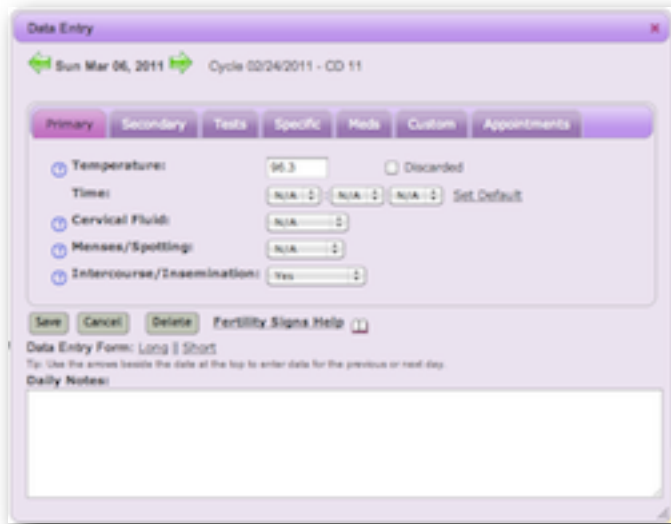
Charting will allow you to:

- Pinpoint the days you can **conceive**
- Find out if and when you **ovulate**
- Monitor your cycles for regularity and any unusual **patterns**
- Monitor your health throughout your cycles
- **Track** and document your conception journey
- **Communicate** effectively with your healthcare provider
- **Plan** and predict your future cycles

Comprehensive Charting System

- Automatic **ovulation detection** based on your fertility signs
- Track your **periods and your fertility signs**: temperature, cervical fluid, tests, etc.
- **Graphically visualize** your signs for better interpretation
- Plan the best pregnancy **test date**





The screenshot shows the 'Data Entry' window for a cycle on Sun Mar 06, 2011. The form includes tabs for Primary, Secondary, Tests, Specific, Meds, Custom, and Appointments. The Primary tab is active, showing fields for Temperature (96.3), Time (N/A), Cervical Fluid (N/A), Meneses/Spotting (N/A), and Intercourse/Insemination (Yes). There are buttons for Save, Cancel, and Delete, and a link to Fertility Signs Help. A note at the bottom says 'Data Entry Form: Long | Short' and 'Tip: Use the arrows beside the date at the top to enter data for the previous or next day.' A 'Daily Notes' section is also visible.

Data Entry

FertilityFriend.com is a comprehensive fertility tracking system. Track as much (or as little) as you wish. You can **track:**

- Your **fertility signs**: temperature, cervical fluid, cervix, tests, symptoms, special situations (and much more...)
- Your own **custom data** to track special events or data in relation with your own cycle
- Your **weight**
- Your **appointments**
- Your daily **notes and journal**



FertilityFriend.com Overview

Calendar ◀ Mar 06, 2011 ▶

Sun	Mon	Tue	Wed	Thu	Fri	Sat
		1	2	3	4	5
6	7	8	9	10	11	12
13	14	15	16	17	18	19
20	21	22	23	24	25	26
27	28	29	30	31		

Enter Data Today Help

Mini Calendar

- **Fertile days and ovulation** at a glance
- **Color Coded**
- **Easy Navigation**
- **Appointments**

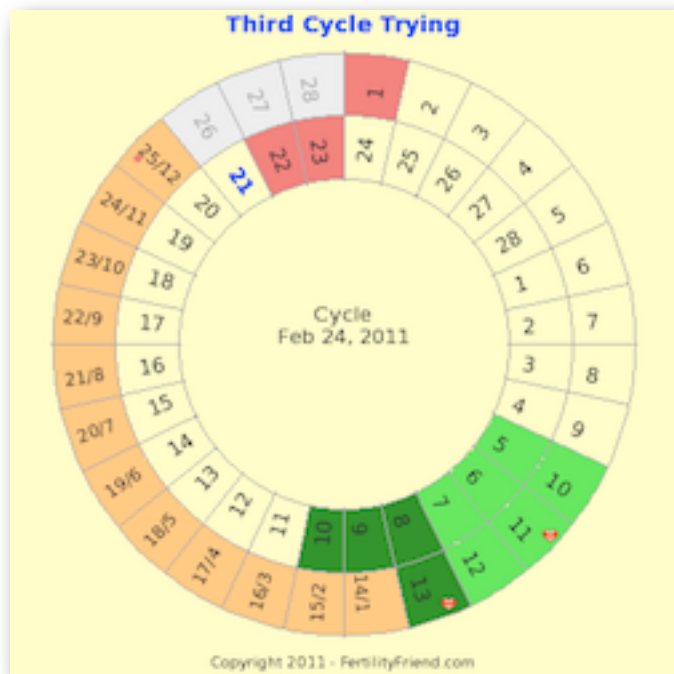
FertilityFriend.com Overview



Full Calendar

- Easy to understand **icons** showing your data and **predictions** by date
- **Fertile days** and **Ovulation** at a glance
- **Color Coded**
- Direct Data **Access**
- Quick **Navigation**
- **Appointments**
- **Two Months View**

FertilityFriend.com Overview



Cycle Wheel

- Natural Representation of your "Cycle"
- **Fertile days** and **Ovulation** at a glance
- **Color Coded**
- **Current** fertility status as well as **Predicted**
- Icons

Fertility Analyzer [vfp](#) **Cycles History**

(3 cycles)	Ave.	Min.	Max.
Ovulation: 14	13	15	
Luteal Phase: 15	13	16	
Cycle length: 30	28	32	

[Details](#) [Help](#) [Graphs](#) [Cycle List](#) [Help](#)

Ovulation Detector

Ovulation: Possibly around Cycle Day 13 (See Cross-Checking notes below)

Coverline: 96.40

Method: Advanced

Cross-Checking: The interpretation seems to be based only on your temperature curve. Your interpretation would be more accurate if it could be cross-checked with other fertility signs (CM at least). [More...](#)

[Tuning/Override](#) [Help](#)

Pregnancy Monitor [vfp](#)

Hide Pregnancy Monitor

Test Date: March 25, 2011

Cycle Day					Score
O-3	O-2	O-1	O	O+1	
	●		●		Good

Temperatures above Cover Line: 12

Top Signs: Frequencies of your top signs on pregnancy charts at 13 DPO: Not enough data. [What's this...](#)

Pregnancy Test Probability: 75.1% of positive pregnancy test are reported before 13 DPO in the [HPT Gallery](#). [Results per Brand](#) [What's this...](#)

Spotting Factor: No spotting recorded for the current day. [What's this...](#) [Search Charts With Spotting](#)

Early Pregnancy Signs:  66pts [What's this](#) [Early Pregnancy Signs Estimator](#) [Help](#)

Due Date: If you conceived this cycle your due date would be: November 29, 2011

Summary: We recommend that you wait until at least the test date. Testing too early may add undue stress and offer ambiguous results. [More...](#) Your luteal phase seems to change more than what we expect. This could make your test date inaccurate. [More...](#)

Ovulation Detection and Chart Interpretation

- Detailed chart interpretation
- Accurate ovulation detection based on your data
- Conception chances evaluation
- Early pregnancy signs analysis
- Cycle history and cycle stats



FertilityFriend.com Overview

Your Cycle Summary [v19](#)

You are 13 days past ovulation (DPO). You are now waiting for the best time to test. [More...](#) We recommend that you wait until at least the test date. Testing too early may add undue stress and offer ambiguous results. [More...](#) Your luteal phase seems to change more than what we expect. This could make your test date inaccurate. [More...](#)

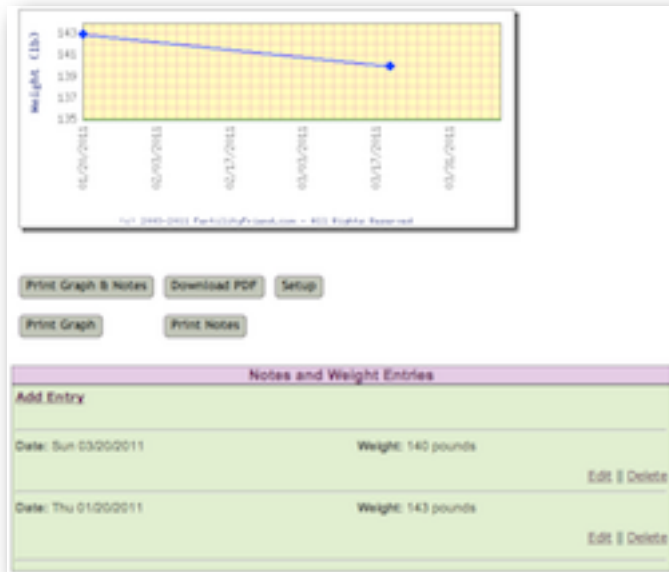
Fertility Sign	Interpretation
Temperature:	Ovulation Detected on Cycle Day 13
Cervical Fluid:	You haven't reported any fertile cervical fluid (egg white or watery). The presence of fertile cervical fluid is a sign of a highly fertile phase usually followed quickly by an ovulation. This can be a normal situation for you. More...
Ovulation Tests:	You haven't reported any Ovulation Test results (OPK, Monitor or Microscope). These tests are not required for using Fertility Friend, however, they can give you more insight into your cycle if your other fertility signs (BBT,OH,CP) are not giving a clear enough picture.

Data Check [v19](#)

Data	Interpretation
Time:	You did not record enough time information at this point.
Temperature Fluctuations:	Ok. Your temperature seems to fluctuate in normal limits.
Luteal Phase:	Your luteal phase changes more than expected from cycle to cycle. This could be a sign of inaccurate temperatures and may require an adjustment of your personal stats. More...

Detailed Interpretation

- **Sign by sign** analysis
- **Monitors** your data for common fertility concerns
- **Test date** prediction



Optional Weight Tracker

- Weight **chart**
- Weight **ticker**
- **Nutritional** journal
- **Fitness** journal
- **Printed** reports



FertilityFriend.com Overview

Display: 6 Months Forecast
[Download PDF/Print](#) [PDF Info](#)

March - 2011							April - 2011						
Sun	Mon	Tue	Wed	Thu	Fri	Sat	Sun	Mon	Tue	Wed	Thu	Fri	Sat
		1	2	3	4	5						1	2
6	7	8	9	10	11	12	3	4	5	6	7	8	9
13	14	15	16	17	18	19	10	11	12	13	14	15	16
20	21	22	23	24	25	26	17	18	19	20	21	22	23
27	28	29	30	31			24	25	26	27	28	29	30

May - 2011							June - 2011						
Sun	Mon	Tue	Wed	Thu	Fri	Sat	Sun	Mon	Tue	Wed	Thu	Fri	Sat
1	2	3	4	5	6	7				1	2	3	4
8	9	10	11	12	13	14	5	6	7	8	9	10	11
15	16	17	18	19	20	21	12	13	14	15	16	17	18
22	23	24	25	26	27	28	19	20	21	22	23	24	25
29	30	31					26	27	28	29	30		

Advanced Data Analysis: Cycle Planner

- **Forecast** your future **periods** and **ovulation** dates
- **Printed** reports



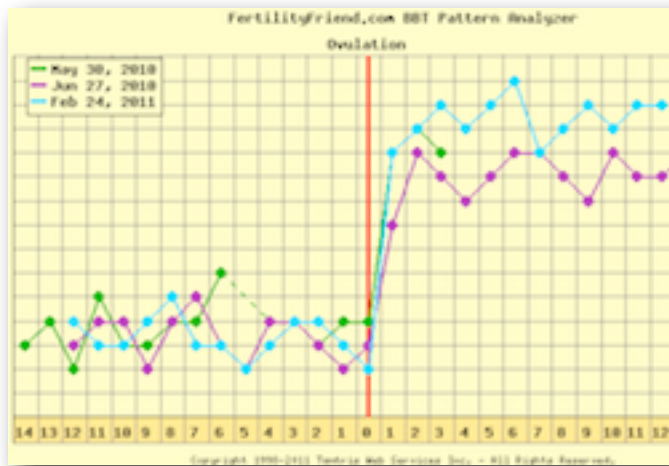
FertilityFriend.com Overview

Intercourse Timing Analyzer						
Cycle	Cycle Day					Score
	O-3	O-2	O-1	O	O+1	
02/24/2011		●		●		● Good
09/15/2010	O Not Detected					
07/26/2010	O Not Detected					
06/27/2010			●	●	●	● Good
05/30/2010						● Low
04/18/2010						● Low
03/30/2010	O Not Detected					

Advanced Data Analysis: Intercourse Timing Analyzer

- Evaluate your **chance of conception**
- Easy to read **color coded summary**

FertilityFriend.com Overview



Advanced Data Analysis: Chart Overlay

- **Stack up** charts for temperature **pattern analysis**
- Discover your **usual pattern**
- See **unusual patterns** quickly
- **Compare** your chart with the thousands of real life charts available in our **gallery**

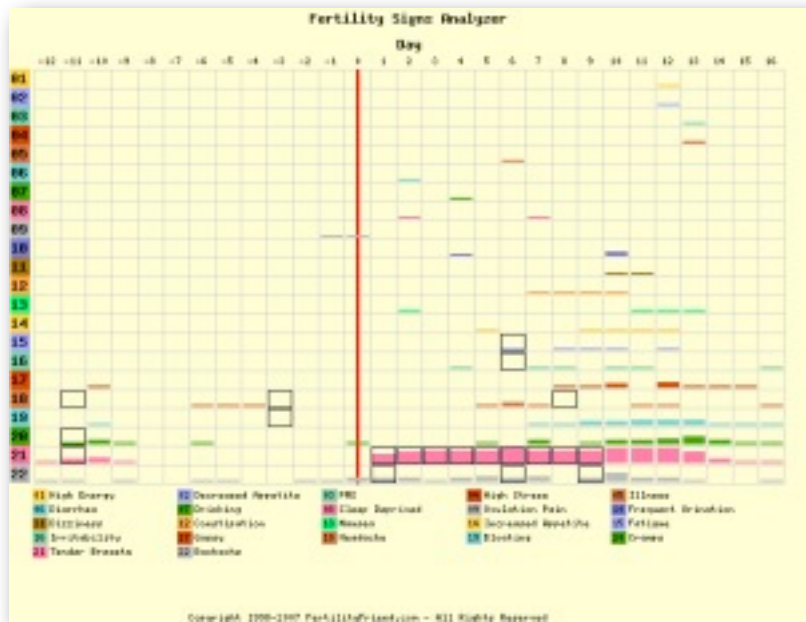
FertilityFriend.com Overview

Advanced Data Analysis: CM Pattern Analyzer

Which cervical fluid pattern predicts your ovulation? Is your cervical fluid pattern an early pregnancy sign? Can your cervical fluid data help you predict your period?

- **Spot** similarities and differences within **your cervical fluid patterns** across cycles.
- Discover your **usual pattern**.
- See **unusual patterns** quickly.
- **Compare** your cervical fluid patterns with the thousands of real life charts on other members' home pages and in the chart gallery.





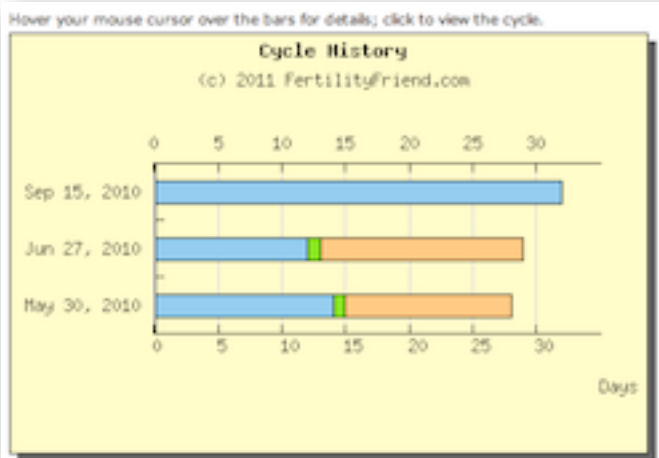
Advanced Data Analysis: Signs Analyzer

Do you usually have headaches before your period? Is your ovulation pain a true indicator of your ovulation? The Signs Analyzer is the perfect way to explore these questions.

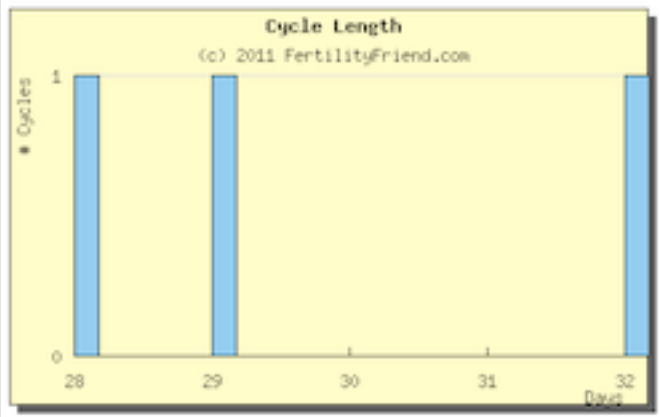
- **Spot** similarities and differences within **your fertility signs patterns** across cycles.
- Discover your **usual pattern**.
- See **unusual patterns** quickly.
- **Compare** your signs with the thousands of real life charts on other members' home pages.

Advanced Data Analysis: Cycle Stats

- **Bar Graphs** of your cycle length, ovulation day and luteal phase length
- **Detailed statistics** of your cycles



Graph description





Sharing: Charting home page with your own web address

- **Private** way to **share your chart** with friends or your **healthcare** provider
- Charting **tickers** (graphically counts your cycle days)
- **Polls**
- Do not share your **password**, share only what you want to show



FertilityFriend.com Overview

Trying to Conceive (TTC) Story Gallery



FertilityFriend.com's story gallery is a place to share and find real life, authentic stories about all aspects of the Trying to Conceive (TTC) journey.

FertilityFriend.com members are encouraged to share their personal stories and experiences. We welcome stories from members at all stages of the TTC journey and those who have already become pregnant.

3000+ stories and counting...

The online database of stories can be browsed or searched by keywords and categories on FertilityFriend.com.

Tip: To find the stories that are most interesting for you, search the gallery using keywords. To search, click the search link in the quick links below.

Quick Links:

Search

Select stories by keywords or categories.

Add Your Story

Add your own story to the gallery and enhance this community resource.

Review Your Submission

View or delete your entry.

Suggestions/Comments

Categories:

Trying to Conceive || Pregnancy after TTC || Adoption after TTC || TTC with Miscarriage/Loss

Your Story

[First Page](#) [Next Page](#) [Last Page](#)

Most Recent Story:

Category: Trying to Conceive Country: Canada

General Context:

- Have sought medical help
- Have had fertility-related tests and/or treatments
- TTC Your First Child

Keywords: short timeframe

Sharing: Story Gallery

- **Real Life** Trying to conceive stories
- **Search** by keywords
- **Find** stories that relates to your own experience
- **Submit** your story and help break the isolation of the trying to conceive journey.



FertilityFriend.com Overview

FertilityFriend.com's Chart Gallery

The chart gallery is fully managed by Fertility Friend members. Members enter their charts and organize them by categories and keywords for easier access. You are now viewing the top level categories. Please click on one of the links below to start browsing. The number in between parentheses beside each category name indicates the number of charts attached to the category. Fertility Friend Members can search the chart gallery using keywords or categories for more specific results. **Tip:** To find the charts that are most interesting for you, search the chart gallery using keywords. To search, click the search link in the quick links below.

Quick Links:

- **Search**
Select charts by keywords or categories. For example you can view all charts in Celsius and with delayed ovulation for women of age greater than 35...
- **Find Charts Like Yours**
Select charts that most resemble your chart.
- **Early Pregnancy Signs Estimator ^{VIP}**
Search charts with specific symptoms at specific days post ovulation (Examples: spotting, supplements, specifics...).
- **Add Your Charts**
Add your own completed charts to the gallery and enhance this wonderful community resource.
- **Review Your Submissions**
Change keywords, delete or move your entries.
- **Suggest New Keywords**

Categories:

[Ovulatory\(74308\)](#) [Anovulatory\(5281\)](#) [Pregnancy\(42518\)](#) [Miscarriage\(4632\)](#)

[My Charts](#)

[View All Charts In Celsius](#)

Sharing: Access an extensive gallery of real life charts

- **Search** by keywords
- **Thousands** of charts and situations
- **Match** your own chart
- **Overlay** your chart to charts in the gallery to compare patterns

Pregnancy Tests & Ovulation Tests Gallery

The Home Pregnancy Test (HPT) and Ovulation Prediction Kit (OPK) Photo Gallery displays photos of pregnancy and ovulation tests annotated by keywords and other data fields. The purpose is to help members identify the results of their test when it is not clear and search for specific types of tests. The gallery also records statistics by brand and other criteria.

Members can upload photos of their test results (ovulation or pregnancy) and organize/view them by categories and keywords (such as brand and days past ovulation, etc)

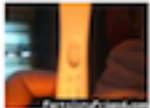
Quick Links:

- || Browse Gallery
- || Search Gallery
Select images by keywords or categories.
- || Suggest Keywords/Categories
- || Add Your HPT/OPK results Images
- || Edit/Delete Your Submissions
Change keywords, delete or move your entries to another category.
- || **NEW** View Gallery Stats
Up-to-date positive pregnancy test stats broken down by brand.

Categories:

Positive Pregnancy Tests (5373) || Negative Pregnancy Tests (524) || Error Pregnancy Tests (327)
 || Positive Ovulation Tests (1173) || Negative Ovulation Tests (231) || Error Ovulation Tests (20)
 || Pregnancy Test Series (534) || Ovulation Test Series (781)

Latest Addition:



Category: Negative Pregnancy Tests
 Keywords: Brand: First Response

Sharing: Pregnancy and Ovulation Tests Photo Gallery

- **Search** by keywords and brands
- **Compare** your tests to the photos in the gallery to interpret them better.
- **Find out** when members take their tests and when they turn positive.
- **Graphical Stats** per brand automatically updated.



Pregnancy Tracker

Once you are pregnant, you can **continue tracking** your pregnancy on our pregnancy tracker:

- **Pregnancy Milestones**
- **Pregnancy Tickers** (countdown to your due date)
- **Baby Development Info**
- **Body Changes**
- **Practical Tips**
- **Ultrasound Gallery**



FertilityFriend.com Overview

FertilityFriend.com: A comprehensive charting system

Try it now, it's FREE!

FertilityFriend.com offers a **free basic charting** service as well as a **high quality premium service** to put the best odds on your side.

All you need:

- **A web browser**
- **A thermometer**

